



Met Office

The Philosophy of the Met Office's Forecasting Review

Will Lang

WGCEF Meeting, Toulouse, 3rd October 2009



What is the Forecasting Review?

- An end-to-end look at the way we create and distribute forecasts.
-based on what will be required by our public and commercial activities in the future.
- In parallel with an ambitious restructure and upgrade of our IT systems – the Transform & Build programme.



Met Office

Why?

- Clarify the role of the forecaster.....forecasting not production.
- Identify the skills, tools and information they need.
- Career structure
- Define best possible model output for each forecast
- Set guidelines for forecaster intervention, and for when forecasts should be automated.
- Make best use of our capabilities
- A flexible, scalable, *simpler* forecasting and production process



Met Office

*“People with the right tools
and the right skills, doing the
right jobs”*



Met Office



Business

Science

Forecasting

Review

Forecasting

$$\nabla^2\omega + \frac{f^2}{\sigma} \frac{\partial^2\omega}{\partial p^2} = \frac{f}{\sigma} \frac{\partial}{\partial p} \mathbf{V}_g \cdot \nabla_p(\zeta_g + f) + \frac{R}{\sigma p} \nabla_p^2(\mathbf{V}_g \cdot \nabla_p T)$$





Make best use of.....

- People
- Observations
- Model data
- Technology



Redesigning the Production Process





Redesigning the Production Process

Stage 4
AUTOMATED
PRODUCTION
with
'Stabilisers'

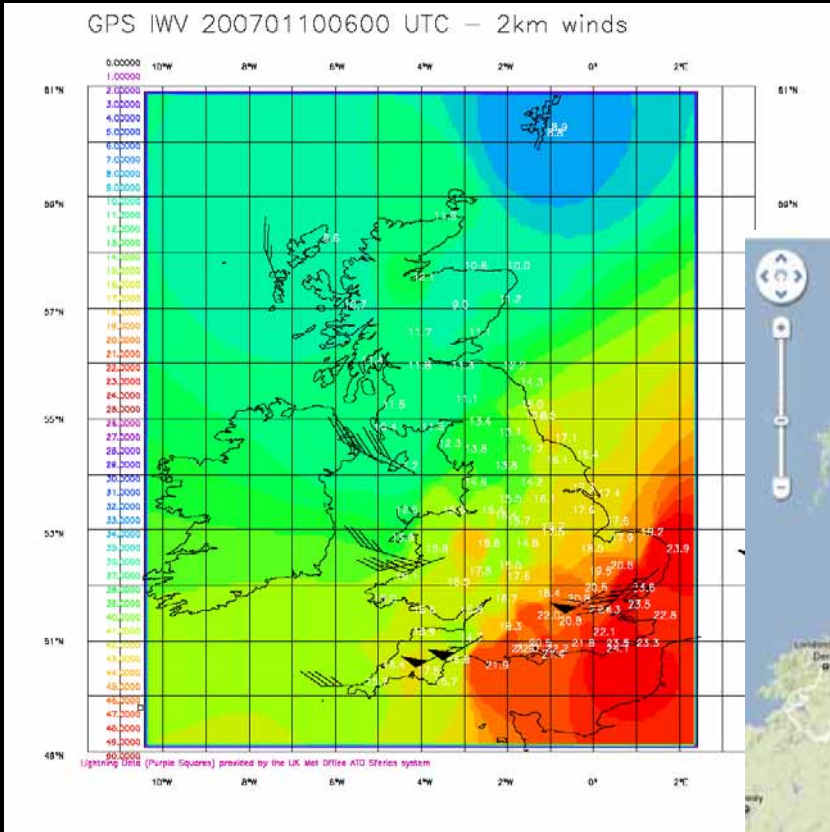


Stage 5
AUTOMATED
PRODUCTION
with
Forecaster Advice

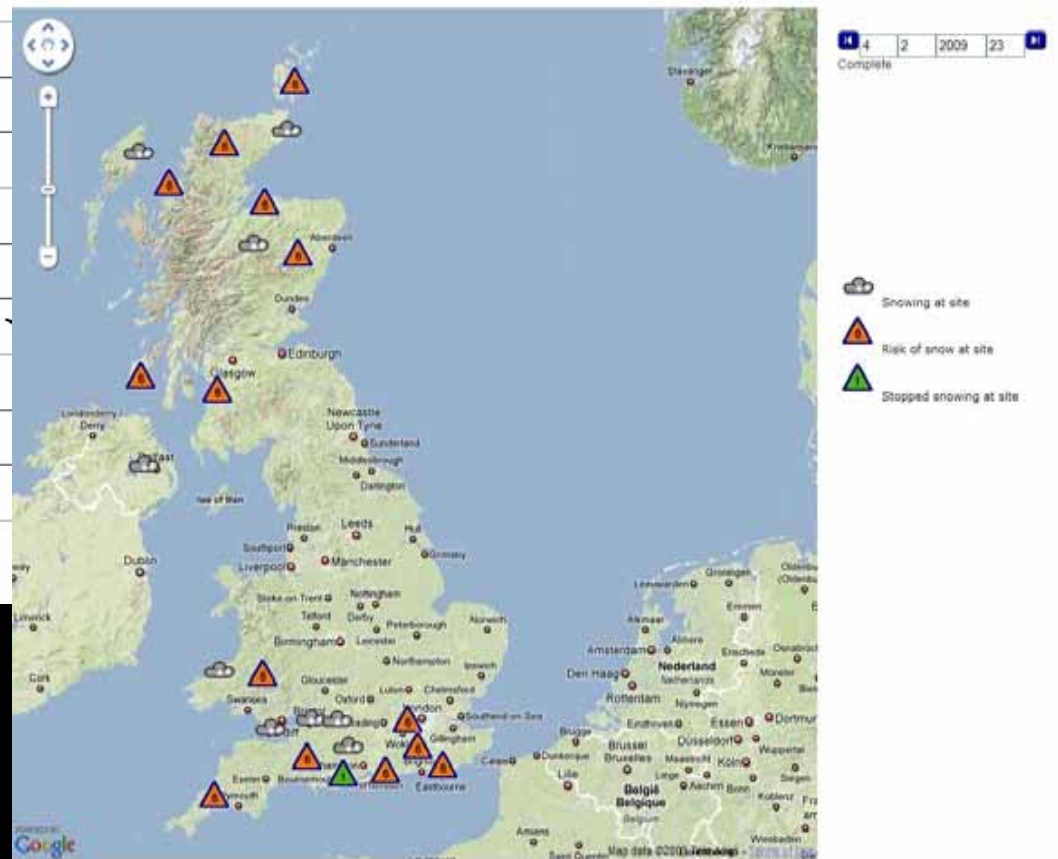


Exploiting our Observing Capabilities

Left: GPS WV imagery – *new data*

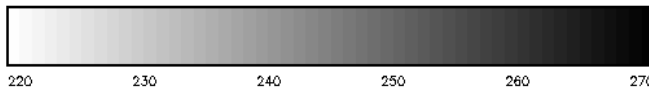
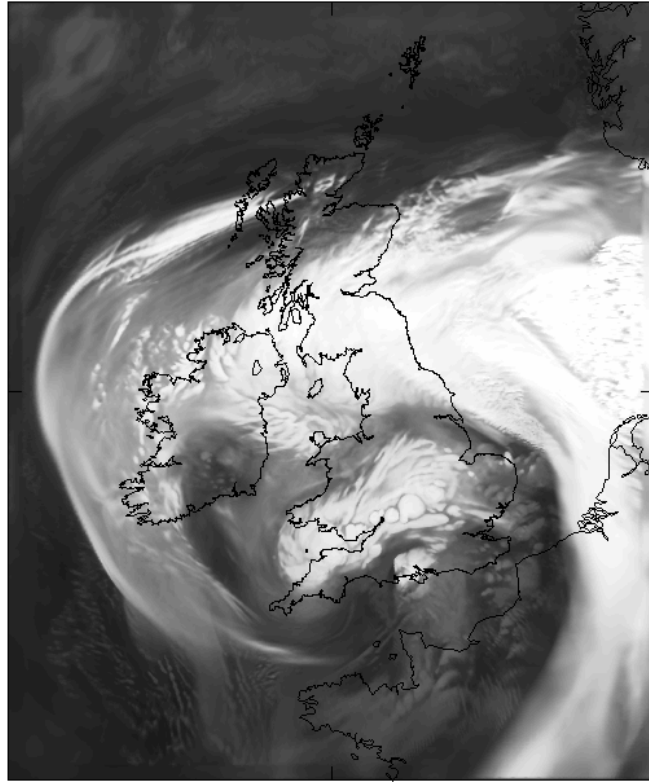


Right: Web Snow Tool – *traditional data/techniques, new analysis and display tools.*

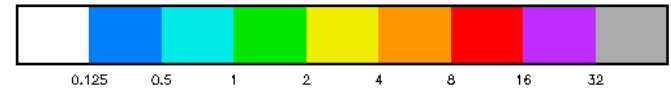
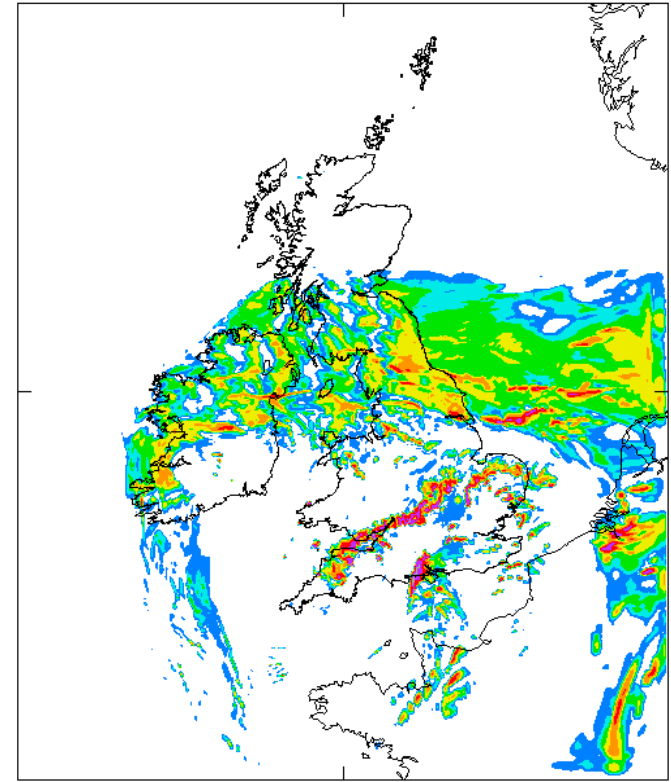


Using our NWP

LW Radiance Temp
1800 05/09/2008



Total precipitation rate, mm/hr
1800 05/09/2008





Exploiting New Technology

Met Office

Carrier 13:55
Met Office
Latest Forecast for your Mobile



- How do we use it to demonstrate our strengths?
- What can we do that others can't?



Met Office

Any Questions?